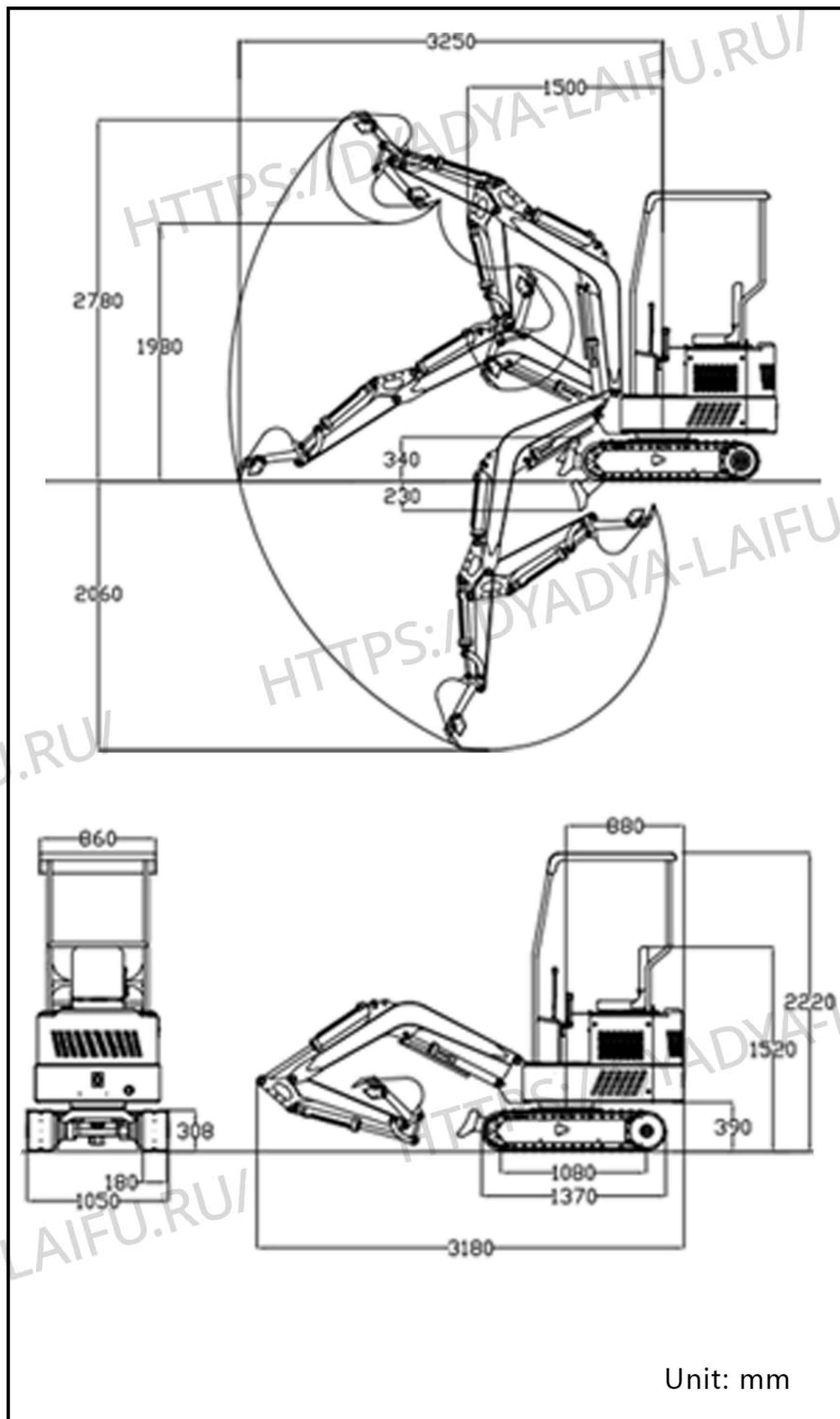


■ Schematic diagram of work area



■ Specification

Basic performance parameters	Machine working weight (kg)	1800
	Bucket capacity (m³):	0.045
	Walking speed low/high speed(Km/h):	0-2.4
	Gradeability(%):	30
	Ground specific pressure (Kpa):	37.27
	Bucket maximum digging force (Kg):	1900
	Maximum digging force of stick (Kg):	1500
	Maximum digging radius (mm):	3250
	Maximum digging depth (mm):	2150
	Maximum digging height (mm):	2825
Body	Maximum unloading height(mm):	2170
	Shipping length(mm):	3330
	Shipping Width(mm):	1100
	Transport height(mm):	2400
	Counterweight ground clearance (mm):	387
	Bucket width(mm):	400
	Boom Length(mm):	1800
Engine	Stick Length(mm):	950
	Bulldozer blade width (mm):	1100
	Engine brand:	Kubota
	engine model:	Kubota D722
	Maximum horsepower (ps):	20
	Maximum power (Kw):	28.5
	Maximum speed(rpm):	2600
	Displacement:	
	Number of cylinders:	3
	cooling method:	Water cooling
Engine oil replacement volume (L):		
Fuel form:	diesel fuel	
Fuel label:	No. 0/-10	
Theoretical fuel consumption (L/h):		

Hydraulic system			
Rated set pressure (Mpa):	25	Rated set pressure (Mpa):	20
Maximum flow of main pump (L/min):	31.2	Maximum set pressure (Mpa):	18
Multi-way valve:	8-way hydraulic control multi-way valve	Walking hydraulic motor type:	BM6-315
Multi-way valve brand:	Taiheng Hydraulic	Walking motor brand:	Zhenjiang Dali

- Please read the instruction manual carefully and use it correctly.
 - Be sure to fasten your seat belt during operation. ※Except for soft top specification
 - When driving construction machinery with a body weight of less than 3t, please receive "special education on driving construction machinery for vehicles" in advance, and be sure to participate in "skills training for driving construction machinery for vehicles" if it is more than 3t.
- R328 According to the conditions of the Occupational Safety and Health Act, the body mass may reach 1200kg
- In order to prevent breakdowns and accidents, be sure to check the machine regularly.



MINI EXCAVATOR R328

Обзор от Дядя Лайфу

**EXCELLENT PERFORMANCE
FULLY MEET THE NEEDS OF
VARIOUS USERS.**



Обзор от Дядя Лайфу

EXCELLENT BASIC PERFORMANCE

[KUBOTA ENGINE]

Powerful performance in a compact design. The excellent performance brought by the extra torque greatly contributes to the improvement of workability. At the same time, low fuel consumption, low vibration, low noise, and consideration for the environment have been achieved at a high level.



DIESEL ENGINE ——— D722

28.5 kw/2600rpm

[OPERATING HANDLE FRONT] (standard configuration)

The excavator adopts a pilot lock to prevent accidental touch and make the operation safer. The vehicle is equipped with an oil source valve and an accumulator to make the pilot operation respond more quickly.

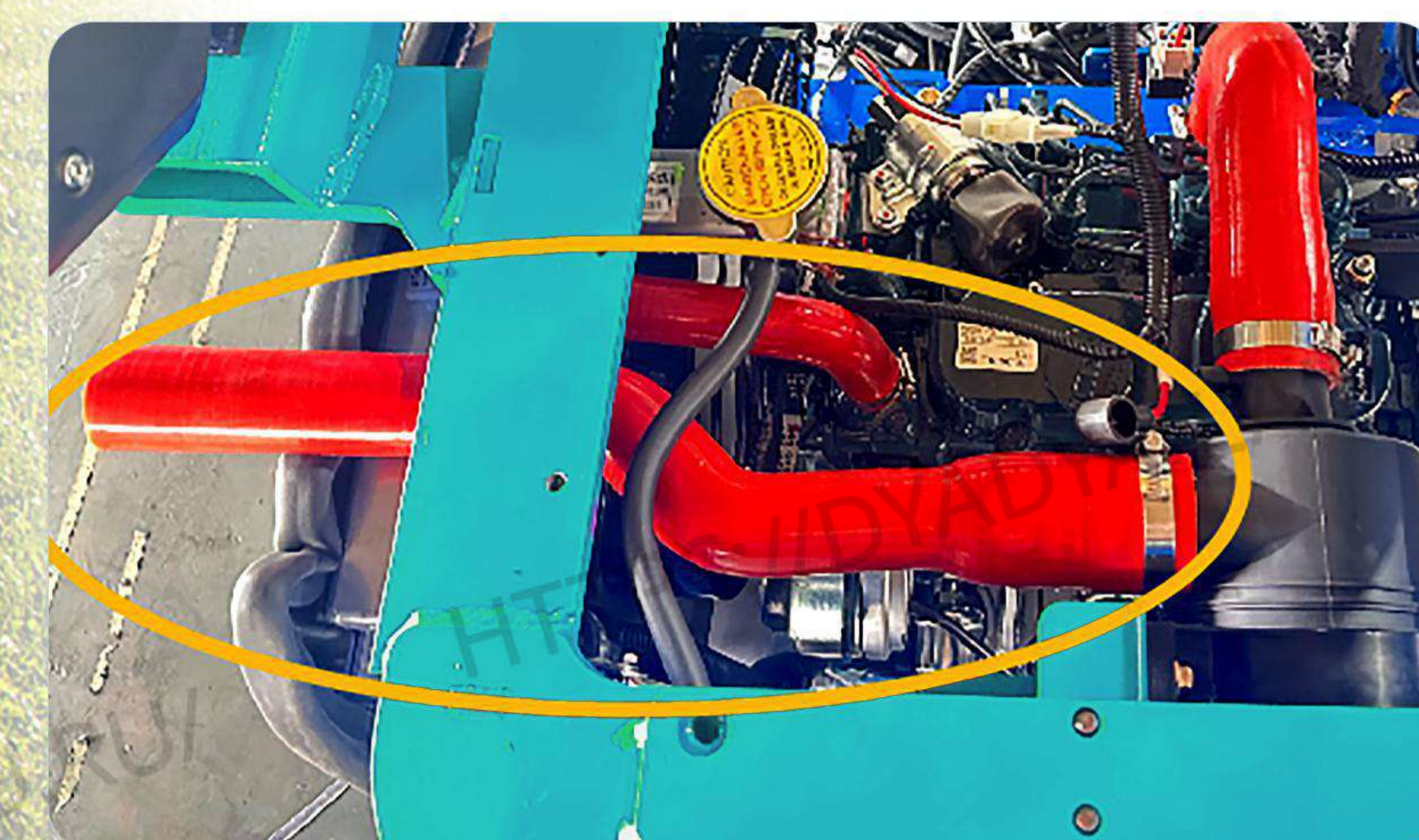


[REPLACE ASSISTIVE DEVICE MODE] (standard configuration)

When replacing auxiliary equipment such as hydraulic quick changers, breakers, and wood grabbers, you can easily replace them by pressing the button, which is convenient and quick.

[RUBBER HOSE]

Lead the air filter intake pipe to the outside of the water tank to directly absorb the natural wind from the outside, so as to avoid the impact on the engine power due to the high intake temperature of the engine, so as to reduce the service life of the engine.



Reliable working performance

[One-piece forged cylinder]

The one-piece forged cylinder rod is used, which will not break and has higher precision.



[Retractable track]

The retractable bottom plate can adapt to various working conditions.

[Protective cover]

The cylinder of the bulldozer blade is equipped with a guard to prevent the cylinder from being damaged.

[Safety seats]

New upgraded adjustable seat, lift adjustment, safe and comfortable.



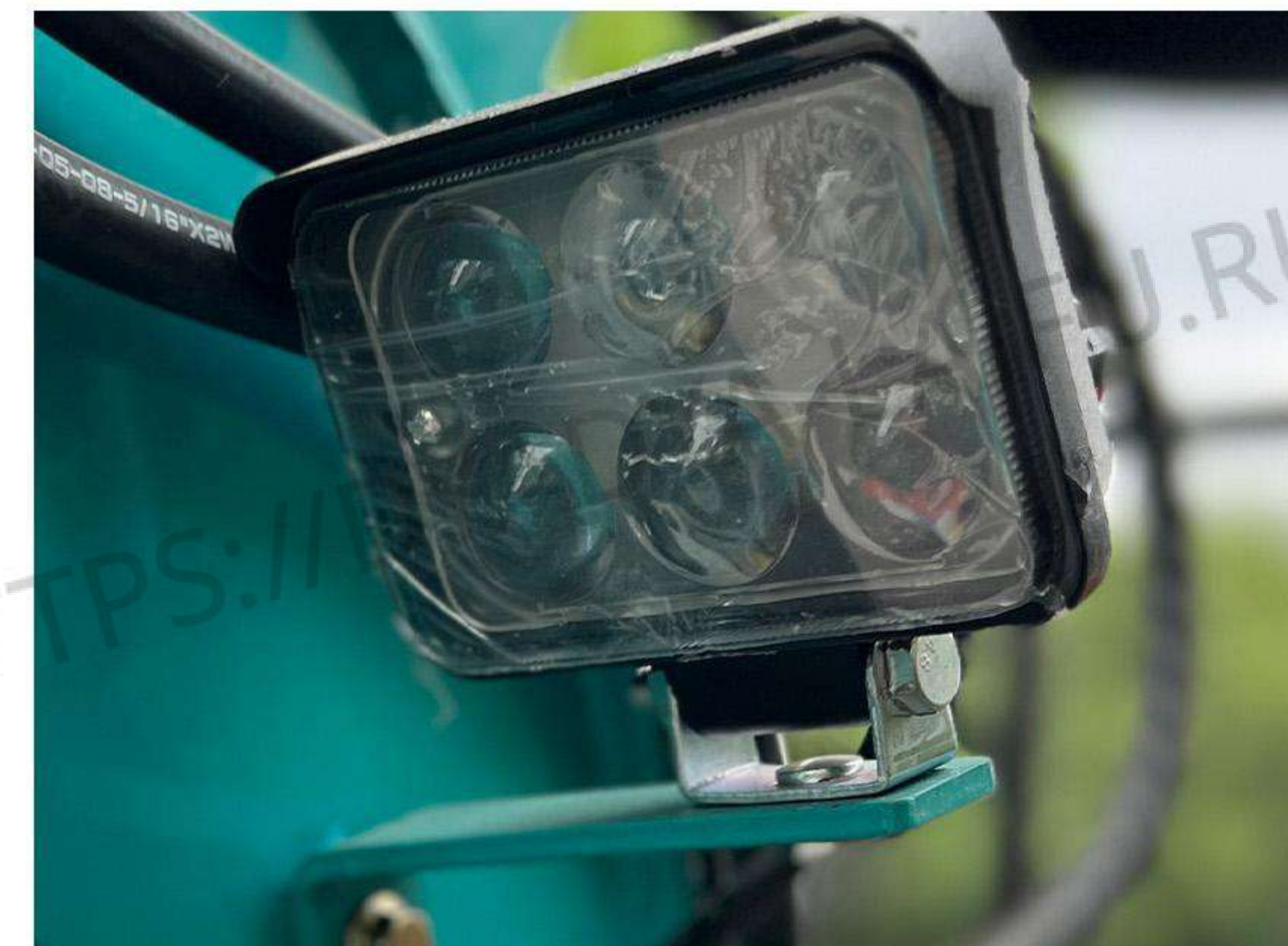
[Dozer blade]

Thick bulldozer blade with long service life and high efficiency.



[LED light]

It can work better at night, increasing the safety of night work.



[Rear suer small turn]

Minimize the part beyond the outside of the track when turning as much as possible, so the machine can turn safely and securely. Ease of operation is ensured even in narrow working environments

[Ultra-low noise setting]

The Ministry of Land, Infrastructure and Transport's ultra-low noise level (below 93dB) has been significantly exceeded, reducing noise in urban areas and during nighttime construction.

Minimum turning radius

1327mm

Minimum radius of gyration in front

Rear turning radius



2780mm

2060mm

Product Highlights

[TUBING BUILT-IN]

The oil pipes are all located inside the boom and the broken oil pipes are protected by steel coil springs. The oil pipe is not easy to be damaged and has a longer service life.



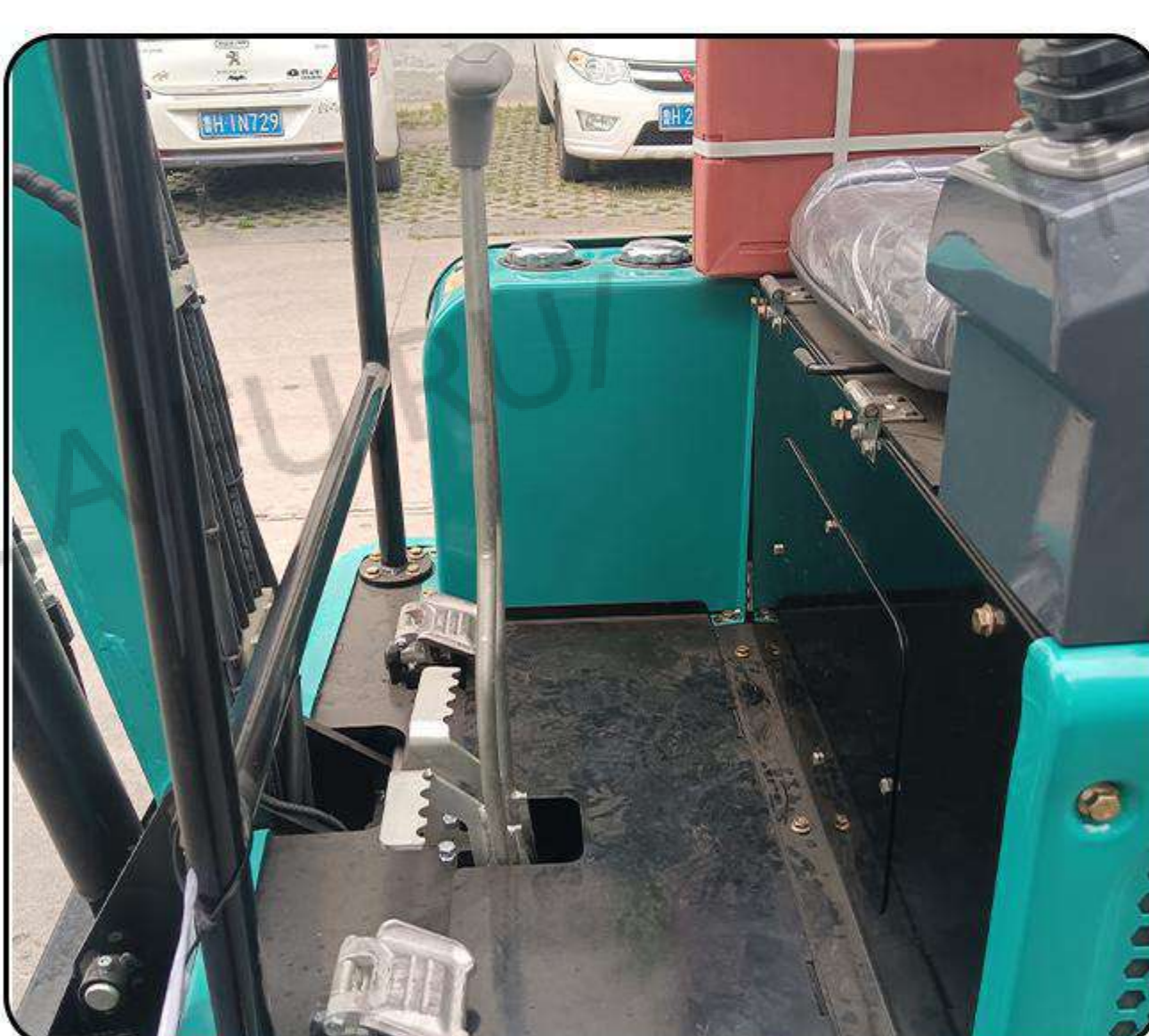
[Dash board]

The right armrest box is equipped with on-board instrument-an integrated multi-function instrument, which can display various parameters such as working hours, oil volume and hydraulic oil volume. It is convenient to observe the status of the whole vehicle, maintain and manage the condition of the whole vehicle in time.



[Walking pole]

The walking rod can be pushed by hand or stepped on by foot, so that both walking and work are correct, which greatly improves the work efficiency.



[Retractable track]

The retractable bottom plate can adapt to various working conditions.



[Add retainer to support wheel]

The rollers add retaining rings, the frame is not stressed, and the use time is long. There are 6 rollers in the whole vehicle, which is more stable and the track is not easy to fall.



[Easy to maintain]

All maintenance parts are at the back, and the rear guard is opened for maintenance and easy replacement.



EXCELLENT OPERABILITY AND COMFORT



Обзор от Дядя Лайфу