



# SKID STEER LOADER NDI635



# EXCELLENT BASIC PERFORMANCE

Обзор на мини-погрузчик RIPPA NDI 635 от Дядя Лайфу



## [ BRIGGS & STRATTON ]

Powerful performance in a compact design. The engine adopts the big brand Briggs & Stratton twin-cylinder engine. At the same time, low fuel consumption, low vibration, low noise, and consideration for the environment have been achieved at a high level.



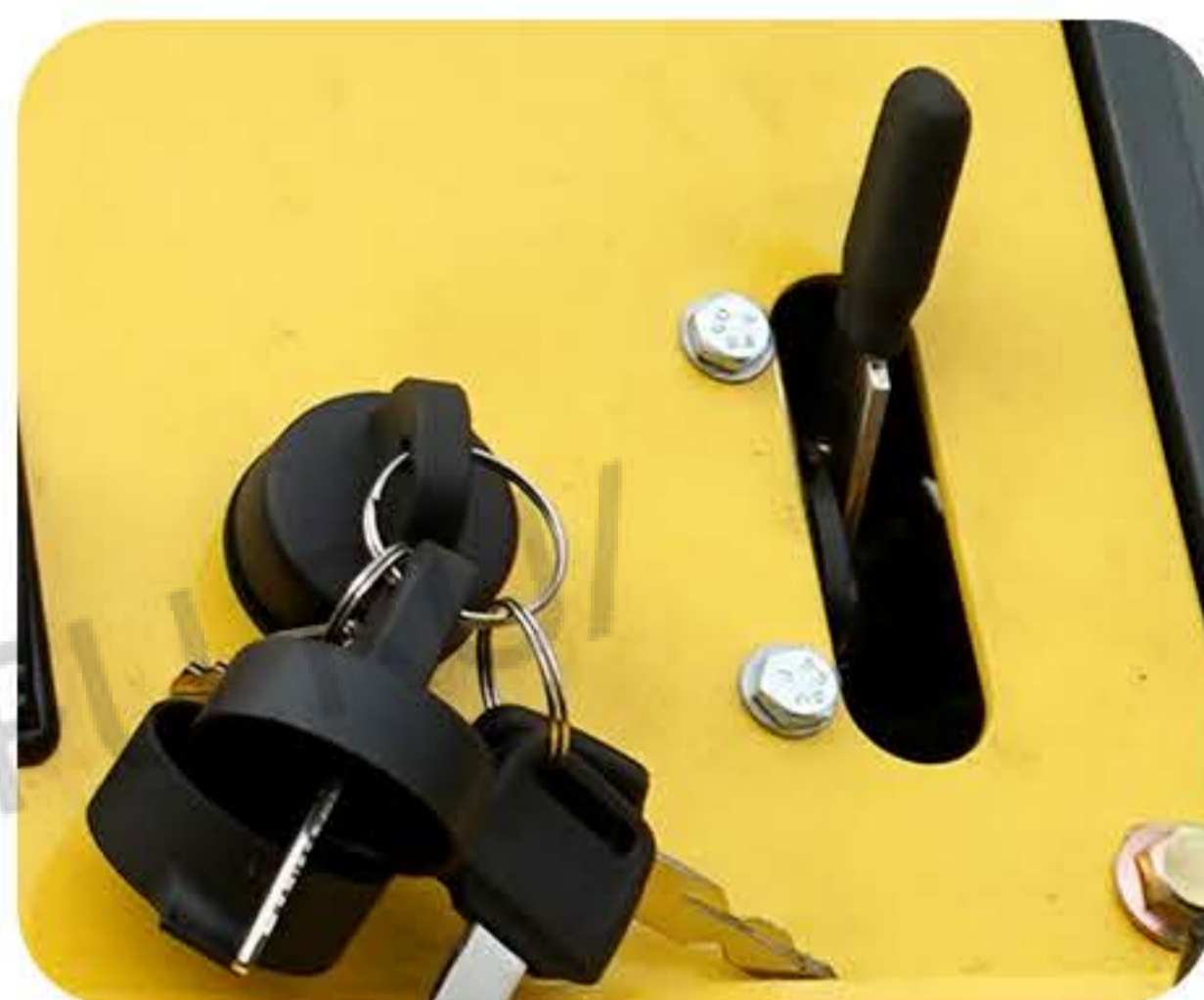
DIESEL ENGINE  3864

**17** kw/3200rpm

## [ SPEED MODE ADJUSTMENT ]

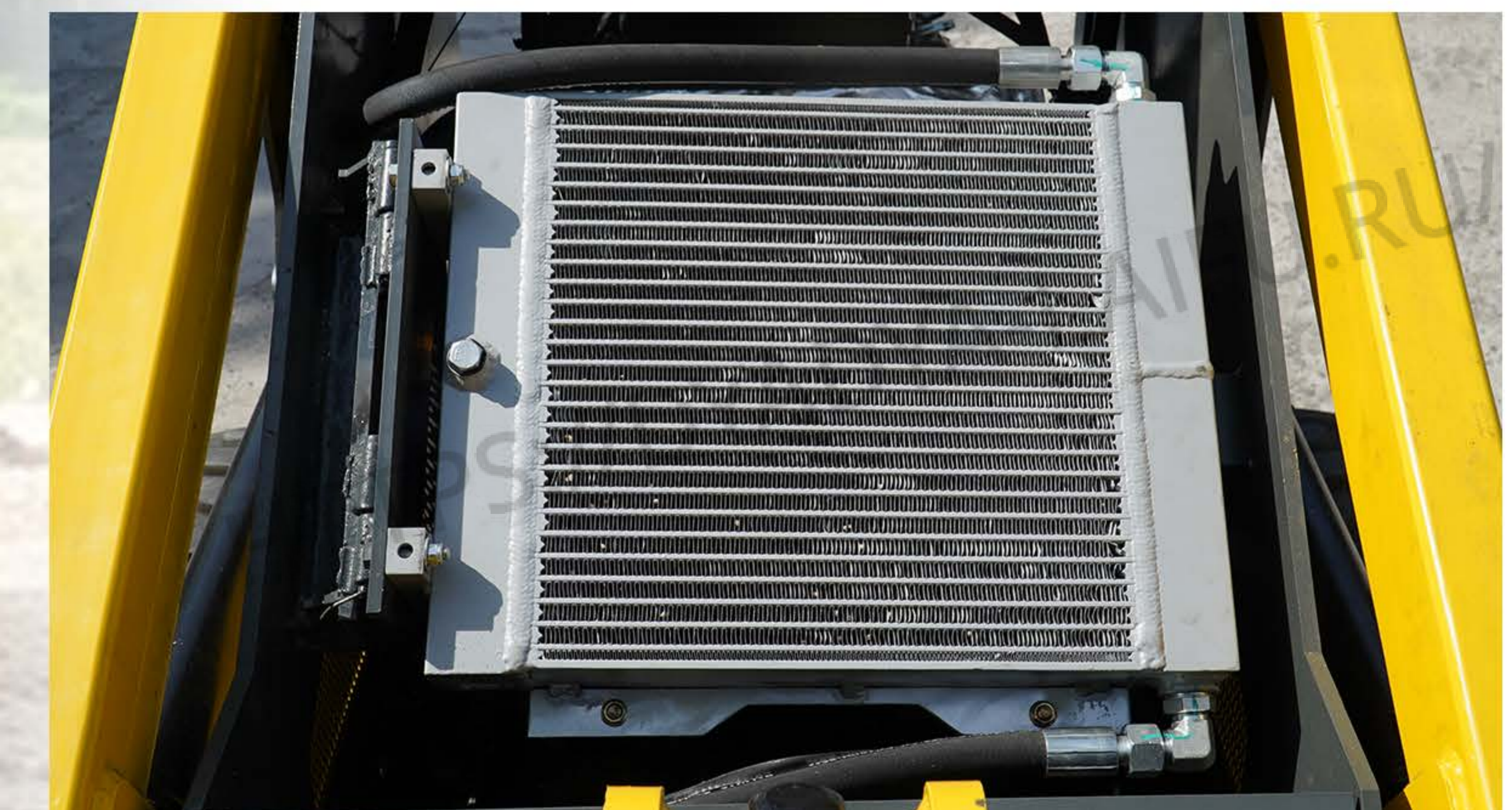
(standard configuration)

When working, just push the pull rod, the engine speed will automatically adjust the speed, and adjust the speed gear according to the working mode to make the work more humanized



## [ FLIP FRONT COVER ]

Convenient inspection and maintenance, hollow-out design, excellent heat dissipation effect



## [ FOOT PEDAL ]

Air support, more labor-saving folding, with non-slip stickers to improve the safety of the driver's operation



**EXCELLENT PERFORMANCE, FULLY MEET THE NEEDS  
OF VARIOUS USERS.**



# MORE ACCESSORIES



## [ REPLACE ASSISTIVE DEVICEMODE ] (standard configuration)

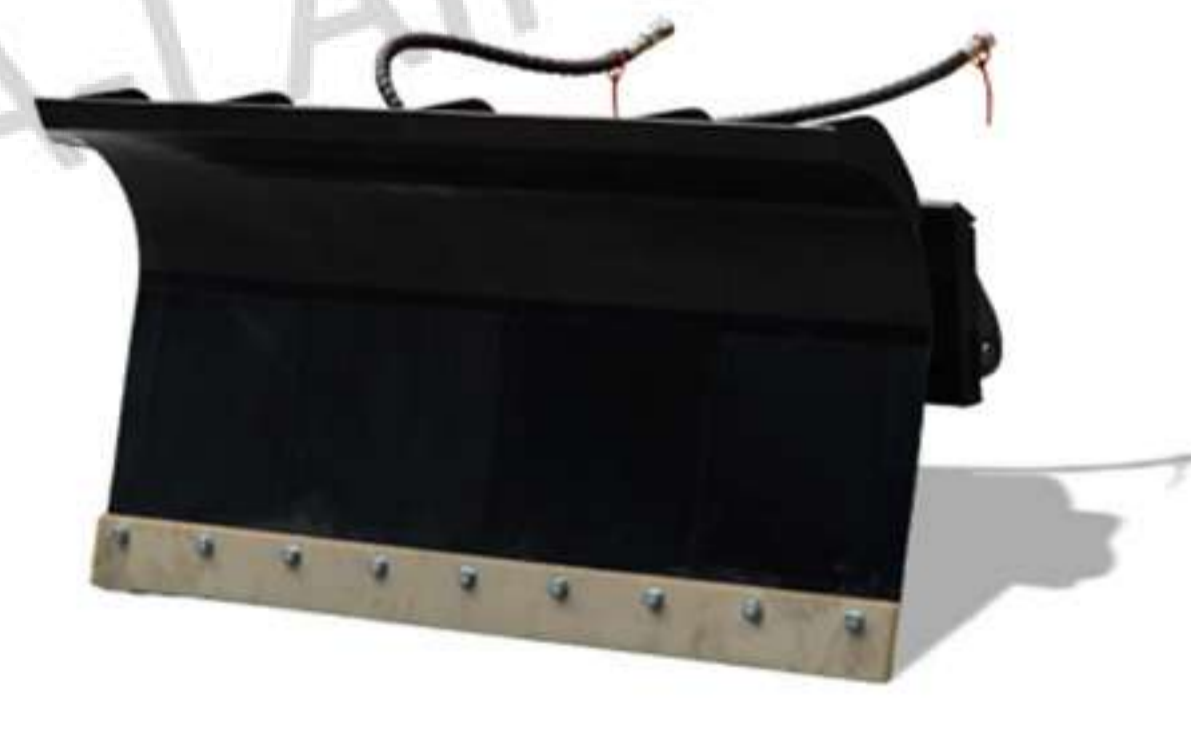
When replacing auxiliary equipment such as hydraulic quick changers, breakers, and wood grabbers, you can easily replace them by pressing the button, which is convenient and quick.



Trencher



Trencher



Snow Blade



Grapple



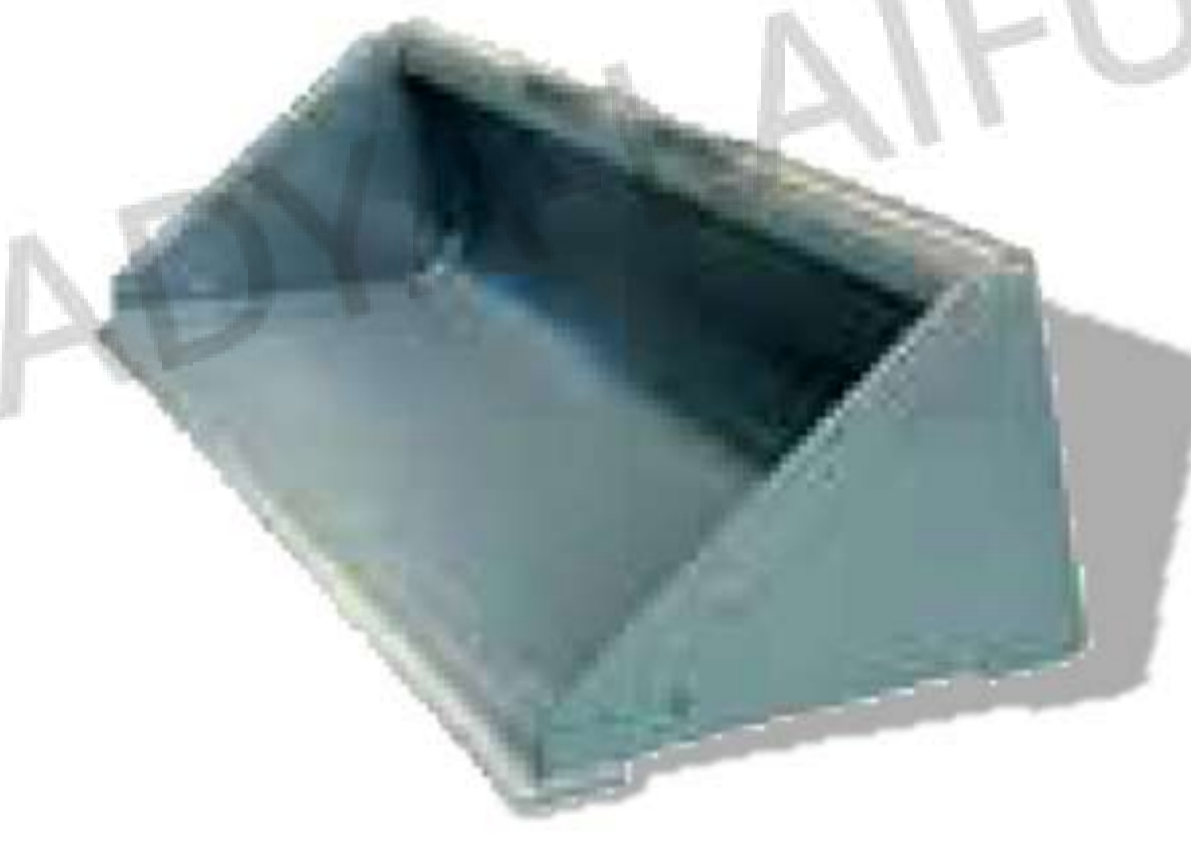
Hydraulic breaker



Rotary drill



Angle Broom



Standard Bucket



Digger



Auger



Pallet Fork



Rock Bucket



4in 1 Bucket



Pile Driver



Fork Clamp



Ditch Compactor

# NDI635 SKID STEER LOADER

Various accessories such as hammers, rippers, timber grabs, and rakes can be added to meet more job requirements.

Quick change can be convenient and quick to replace the auxiliary equipment.

Safe operation, can realize 360° omni-directional operation

Detachable inspection panel is convenient for inspection and inspection of sprockets and travel motors can be more rigorous.

The engine adopts the big brand Briggs & Stratton twin-cylinder engine.

Both the wheel type and the crawler type adopt chain transmission (four driving forces), so that the transmission efficiency is higher

There are anti-skid stickers on the pedals to prevent slipping when operating the machine.



# SHOW MORE DETAILS



# IMAGE DISPLAY



The auxiliary device operating lever has a self-locking function, which is more convenient to operate and saves time and effort.



The oil pipe adopts a built-in pipe arrangement, which can effectively protect the oil pipe, reduce wear and tear and prolong the service life of the oil pipe.



Lifting rings are provided on the front and rear of the machine for easy lifting of the machine.



The inversion of the cylinder can effectively protect the cylinder rod from damage and prolong the service life of the cylinder.

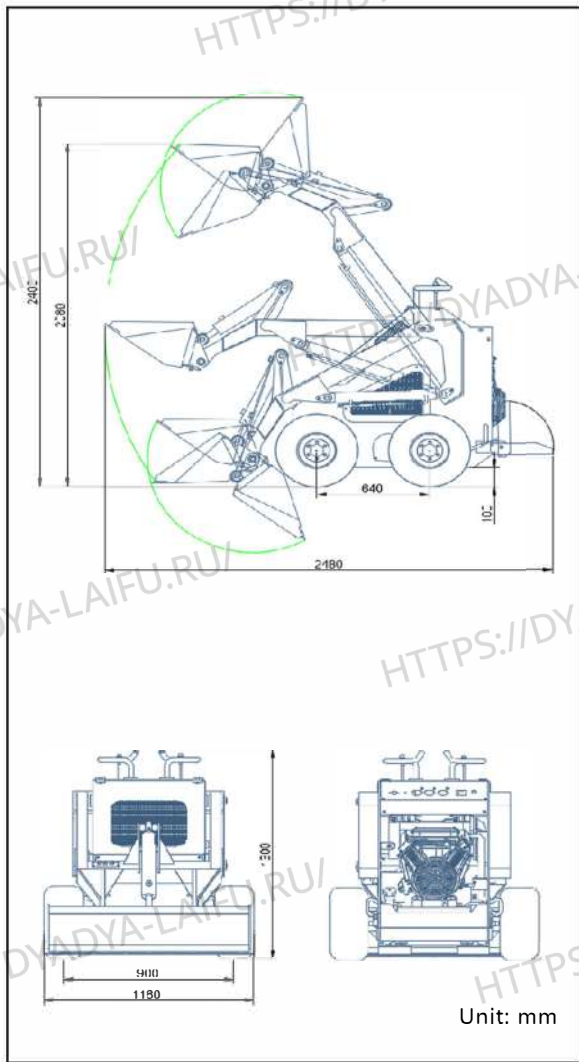


# DETAILED PARAMETER CONFIGURATION

All dimensions (length x width x height)	2230 x 1160 x 1300 mm
Rated power	17 (kw)
Rated speed	3200 (r/min)



## ■ Schematic diagram of work area



## ■ Specification

Body data	Vehicle mass (kg)	800
	Dimensions (mm) (L*W*H)	2230*1160*1300
	Bucket width (mm)	1150
	Wheelbase (mm)	640
	Wheel base (mm)	900
	Ground clearance (mm)	100
	Gradeability(%)	25
	Maximum loading height (mm)	2080
	Maximum unloading height (mm)	1950
	Maximum height (mm)	2400
	Minimum height (mm)	1270
Hydraulic system	Rated pressure (MPa)	18MPa
	Hydraulic pump displacement (ml/r)	0505
	Hydraulic pump flow (L/min)	16
	Travel motor displacement (ml)	375
	Triple multi-way valve	take off
	Two-way multi-way valve	take off
	Engine model	Breton Twin Cylinder 3864
Engine	Rated speed (r/min)	3200
	Rated power (kw)	17
	Displacement (CC)	627
	Number of cylinders	double cylinder
	Cooling method	air cooling
	Engine oil replacement amount (L)	1.7
	Fuel form	gasoline
Bucket	Bucket capacity (m3)	0.15
	Bucket loading mass (kg)	300
Tire	Tire specifications	18*8.50-8
Tank	Hydraulic tank capacity (L)	25.8
	Fuel tank capacity (L)	19.9

Engine			
Engine model	Breton Twin Cylinder 3864	Number of cylinders	double cylinder
Rated speed (r/min)	3200	Cooling method	air cooling
Rated power (kw)	17	Engine oil replacement amount (L)	1.7
Displacement (CC)	627	Fuel form	gasoline

- Please read the instruction manual carefully and use it correctly.
- Be sure to fasten your seat belt during operation. ※Except for soft top specification
- When driving construction machinery with a body weight of less than 3t, please receive "special education on driving construction machinery for vehicles" in advance, and be sure to participate in "skills training for driving construction machinery for vehicles" if it is more than 3t.
- In order to prevent breakdowns and accidents, be sure to check the machine regularly.