

# RIPPA<sup>®</sup>

GLOBAL RECRUITMENT DISTRIBUTORS

RIPPA 20 YEARS



Обзор на мини-погрузчик  
RIPPA R915 от Дядя Лайфу

# R915





RIPPA's advantages in power, efficiency, versatility and value are driven by our robust features. Our compact articulated design uses less horsepower to do most jobs-that means less surface impact and lower operating costs.

- ✔ Excellent weight to lift ratio
- ✔ increases productivity, saving time and manpower
- ✔ Minimal surface impact
- ✔ Articulated, compact design
- ✔ Low operating cost
- ✔ Easy to operate
- ✔ 360° operator visibility
- ✔ Hundreds of attachments

Обзор на мини-погрузчик RIPPA R915 от Дядя Лайфу



# ENERGY SAVING AND EFFICIENT



Обзор на мини-погрузчик RIPPA R915 от Дядя Лайфу

## High efficiency

Low fuel consumption and excellent productivity help you complete your tasks more economically.

## Highly efficient performance

Tailor-made to meet job site requirements, tasks range from material transport and loading to general construction and stockpiling.

## Easy maintenance

Our electrical and hydraulic maintenance center has additional critical maintenance functions that enable quick, simple, and efficient machine maintenance and on-site component replacement.

## ECONOMICAL SAVINGS

**R915**  
IS YOUR WISE  
CHOICE

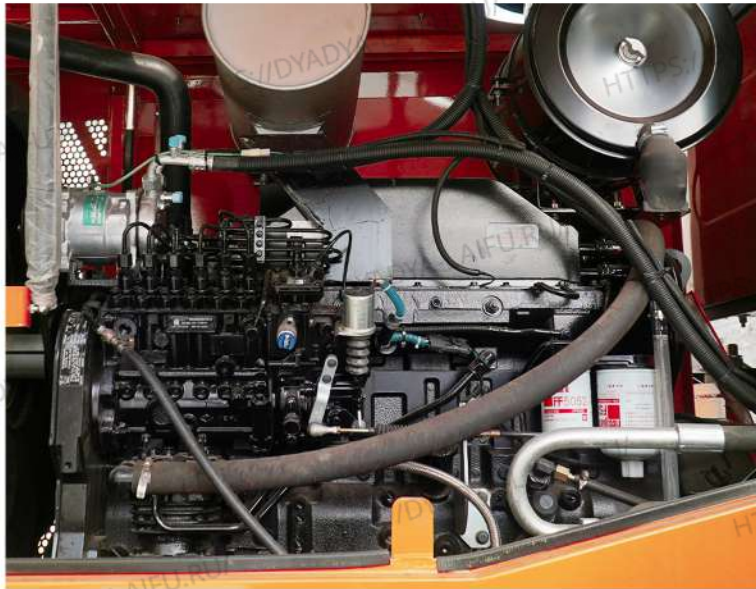


REDUCE **OWN FUEL** COST



# MAINSTREAM POWER IN THE INDUSTRY, GOOD ECONOMICS

The engine is equipped with a turbocharger, meets Euro V standards, is powerful and efficient. Equipped with P, S, E multi-state switches, which can be reasonably selected according to the working conditions, which can reasonably improve efficiency and reduce fuel consumption.



H-shaped new appearance, beautiful and elegant; Compact and flexible, one machine can be used for multiple purposes, with quick return on investment to avoid equipment being idle.



# THE FRAME HAS STRONG LOAD-BEARING CAPACITY

Tires are more solid and durable and can be used in earth and stone construction of highways, railways, buildings, hydropower, ports, mines and other construction projects.

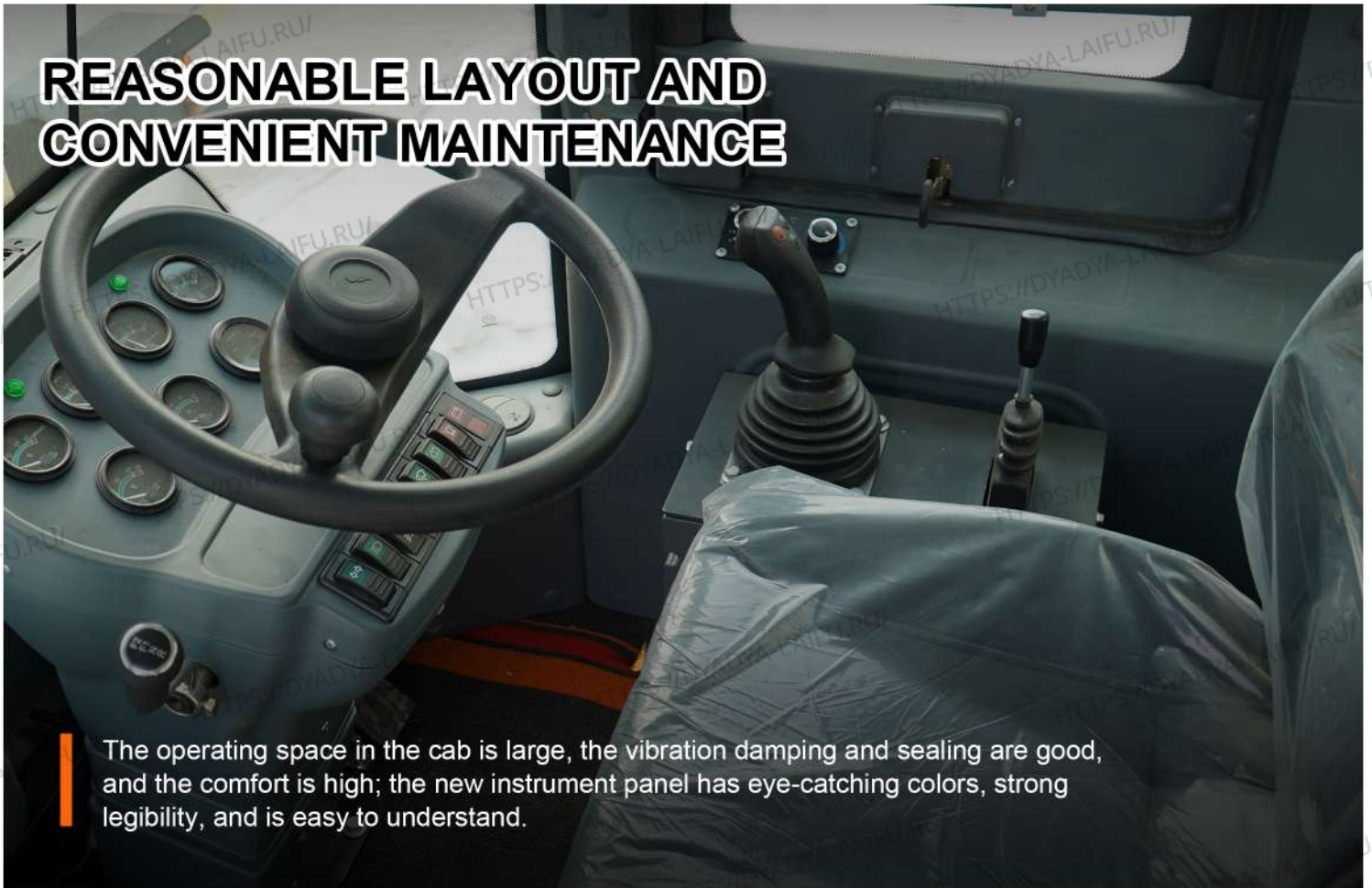


Reinforced front and rear frames: The key stress-bearing parts are strengthened in design, with strong bearing capacity; stress concentration is eliminated, load distribution is reasonable, and the service life is long.





# REASONABLE LAYOUT AND CONVENIENT MAINTENANCE



The operating space in the cab is large, the vibration damping and sealing are good, and the comfort is high; the new instrument panel has eye-catching colors, strong legibility, and is easy to understand.



The horizontal radiator has small medium flow resistance and good heat dissipation effect.



The hydraulic oil tank refueling port and torque converter oil filter are externally located for easy maintenance;



The comfortable and spacious cab is equipped with heating and cooling air conditioning and safety seats to ensure driving experience and safety.



The multi-functional display instrument can intuitively display various data of the machine, and the operator can monitor the health status of the machine through it.



The large-opening hood can be opened upward 90°, providing a large space for maintenance; the air filter and fuel filter are centrally arranged.



# VARIOUS ASSISTIVE DEVICES



Quick change



snowplow



Grab a wooden fork



Fork



Bulldozer



snow shovel



4-in-1 bucket



6-in-1 bucket



# SPECIFICATION



Model	R915
Dimensions(L*W*H)	5800×1800×2700mm
Bucket Capacity	0.65m <sup>3</sup>
Max. Discharge height	4500mm
Engine Rated Power	37KW
Max Dumping Height	2900mm
Min. Discharge height	3500mm
Engine Brand/Model	Yunnei YN25GB (Euro 5)
Bucket Type	1500kg
Steering System	Articulated hydraulic steering
Driving System	Four wheel drive
Weight	4200KG
Service Brake	Four wheel disc brake
Parking Brake	Disc brake
Tyre Model	20.5/70-16
Wheel base	2500mm
System pressure	16Mpa