

# RIPPA®

GLOBAL RECRUITMENT DISTRIBUTORS

RIPPA 20 YEARS



# R906



RIPPA's advantages in power, efficiency, versatility and value are driven by our robust features. Our compact articulated design uses less horsepower to do most jobs-that means less surface impact and lower operating costs.

- ✔ Excellent weight to lift ratio
- ✔ increases productivity, saving time and manpower
- ✔ Minimal surface impact
- ✔ Articulated, compact design
- ✔ Low operating cost
- ✔ Easy to operate
- ✔ 360° operator visibility
- ✔ Hundreds of attachments

# ENERGY SAVING AND EFFICIENT



Обзор на мини-погрузчик RИРРА R906 от Дядя Лайфу

## High efficiency

Low fuel consumption and excellent productivity help you complete your tasks more economically.

## Highly efficient performance

Tailor-made to meet job site requirements, tasks range from material transport and loading to general construction and stockpiling.

## Easy maintenance

Our electrical and hydraulic maintenance center has additional critical maintenance functions that enable quick, simple, and efficient machine maintenance and on-site component replacement.

## ECONOMICAL SAVINGS

**R906**  
IS YOUR WISE  
CHOICE



REDUCE

OWN  
FUEL

COST

# MAINSTREAM POWER IN THE INDUSTRY, GOOD ECONOMICS

The engine is equipped with a turbocharger, complies with EuroV / EPV4 standards, and is powerful and efficient. Equipped with P, S, E multi-state switches, which can be reasonably selected according to the working conditions, which can reasonably improve efficiency and reduce fuel consumption.

H-shaped new appearance, beautiful and elegant; Compact and flexible, one machine can be used for multiple purposes, with quick return on investment to avoid equipment being idle.

Обзор на мини-погрузчик  
RIPPA R906 от Дядя Лайфу



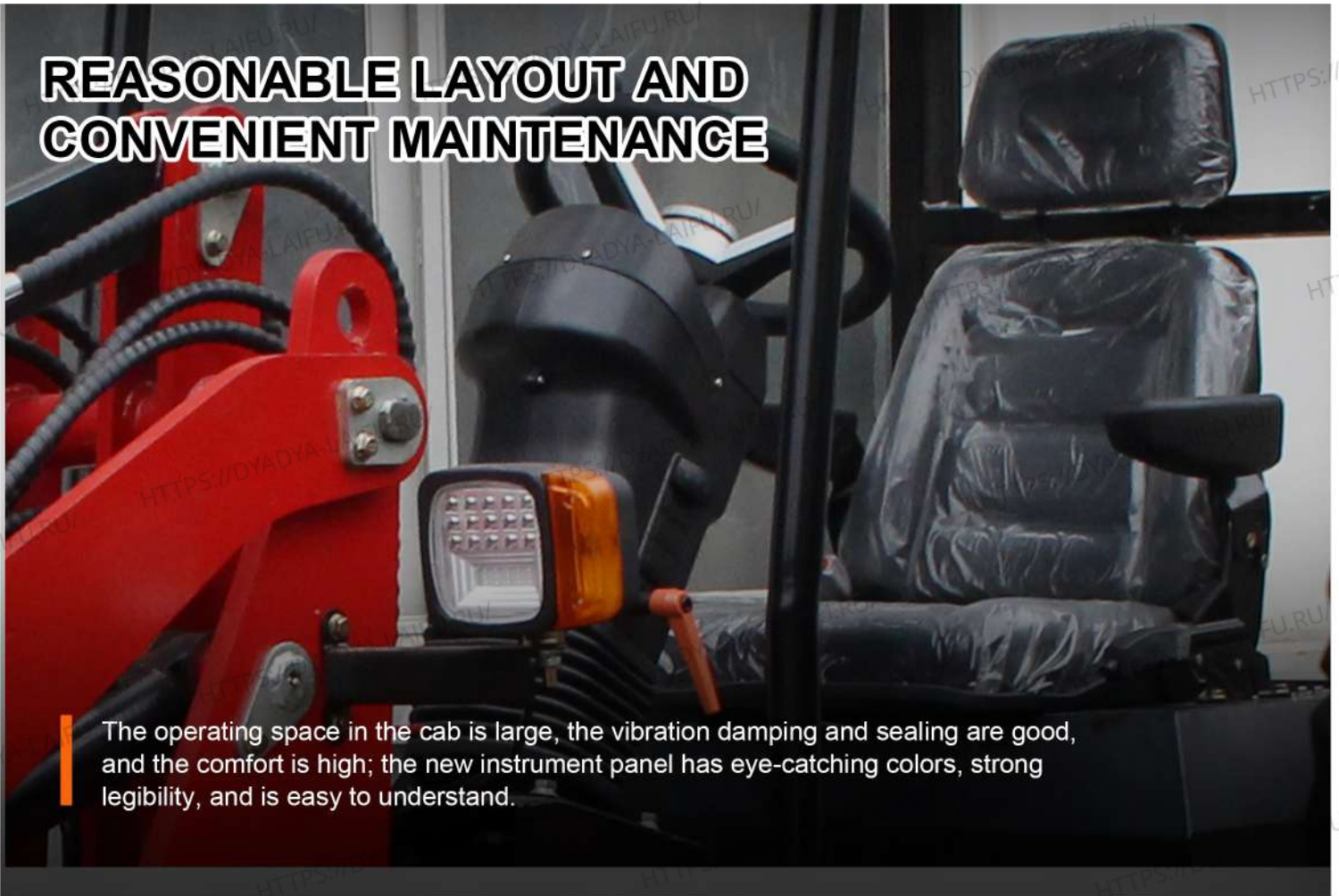
# THE FRAME HAS STRONG LOAD-BEARING CAPACITY

Tires are more solid and durable and can be used in earth and stone construction of highways, railways, buildings, hydropower, ports, mines and other construction projects.

Reinforced front and rear frames: The key stress-bearing parts are strengthened in design, with strong bearing capacity; stress concentration is eliminated, load distribution is reasonable, and the service life is long.



# REASONABLE LAYOUT AND CONVENIENT MAINTENANCE



The operating space in the cab is large, the vibration damping and sealing are good, and the comfort is high; the new instrument panel has eye-catching colors, strong legibility, and is easy to understand.



The horizontal radiator has small medium flow resistance and good heat dissipation effect.



The hydraulic oil tank refueling port and torque converter oil filter are externally located for easy maintenance;



Removable four-leg canopy. The ceiling adopts 30mm thick round tube, the ceiling does not shake when walking, and the welded ceiling cover is strong and durable.



The whole vehicle is equipped with headlights, work warning lights, turn signals, etc., providing lighting and safety for night work.



The large-opening hood can be opened upward 90°, providing a large space for maintenance; the air filter and fuel filter are centrally arranged.

# VARIOUS ASSISTIVE DEVICES



Quick change



snowplow



Grab a wooden fork



Fork



Bulldozer



snow shovel



4-in-1 bucket



6-in-1 bucket

# SPECIFICATION



Model	R906
Total Weight	1700kg
Total length	3650mm
Total width	1150mm
Total height	2300mm
Rated bucket capacity	0.6m <sup>3</sup>
Rated charge mass	600kg
Maximum discharge height	2025mm
Discharge distance	650mm
Minimum turning radius	2.4m
engine brand	Perkins
engine model	84527R
Output Power	18.2kw
Walking speed	0-12km/h
Climbing angle	25%