

- ◆ It is the heavy duty tail-less excavator with the family appearance, which is power flexible and stable.
- ◆ Large power engine meeting European 5 emission standard is used and hydraulic system is installed for easy and efficient operation and coordination and energy saving.
- ◆ A large space cabin is provided with automatic air conditioning, air suspension damping seat and other devices to provide relaxed and enjoyable driving experience.
- ◆ 10-inch touch intelligent instruments, right side integrated operator console, and blind spot monitoring devices on the right side and rear side are installed to show the machine status and surrounding situation at any time.
- ◆ Auxiliary pipeline and electric proportional precision control function are provided for different tools and working conditions.
- ◆ With large maintenance space and removable enclosure, the maintenance activities could be carried out conveniently and easily.



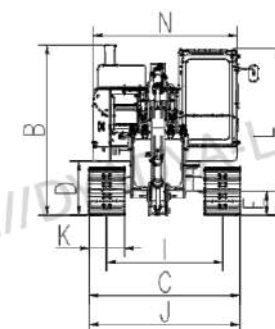
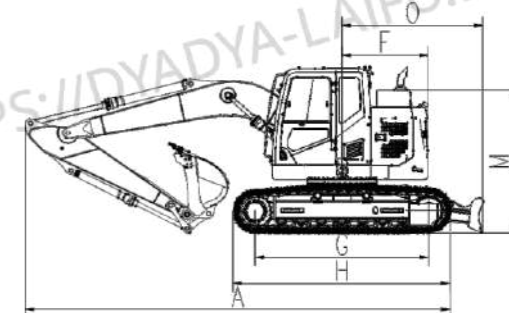
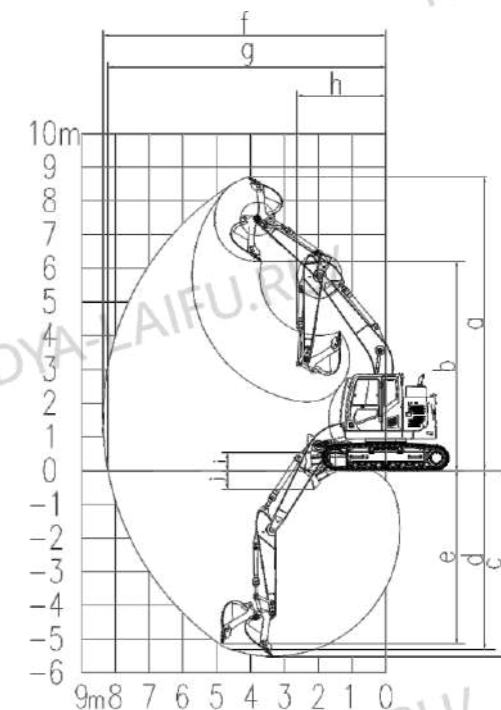
SWE155UF

Parameters and performance of the main machine

Dimension (L*W*H)	mm	7945X2600X2945	
Overall weight	With rubber track	t	\
	With steel track	t	16.5
Standard bucket capacity	m ³	0.61	
Bucket digging ability	kN	100	
Digging force of arm	kN	76	
Max. traction	kN	\	
Deflection angle (boom)	°	\	
Travel speed (Max/Min)	km/h	5.5/3.2	
Gradeability	°	30	
Ground pressure	kPa	41	
Slewing speed	rpm	11	
Engine	Brand	CUMMINS	
	Model	F3.8(Euro V/US IV)	
	Type	4-cylinder, 4-stroke, water cooling, intercooling, DI	
	Displacement	L	3.8
	Power/Rotation speed	kw/rpm	90/2200
Fuel tank capacity	L	180	
Primary pump	Type	Variable piston pump	
	Flow rate	L/min	330
Pressure of main relief valve	MPa	34.3/31.4	
Hydraulic oil tank capacity	L	150	

Working range

	Arm length	mm	2500
a	Max. digging height	mm	8700
b	Max. dumping height	mm	6200
c	Max. digging depth	mm	5525
d	Max. vertical digging depth	mm	5140
e	Max. digging radius	mm	8430
f	Max. digging reach at ground level	mm	8285
g	Max. lift height of the dozer blade	mm	520
h	Max. digging depth of the dozer blade	mm	558
r	Min. swing radius	mm	2640
	Bulldozer blade length*width	mm	2600X580



Outline dimension

A	Wheel tread	mm	3000	G	Chassis ground clearance	mm	410
B	Total track length	mm	3765	H	Track height	mm	832
C	Ground clearance of platform	mm	930	I	Total length	mm	7945
D	Platform tail slewing radius	mm	1490	J	Cab roof height	mm	2885
E	Chassis width	mm	2600	K	Upper-structure width	mm	2490
F	Track width	mm	600				

★The above parameters may be different due to product upgrading.

- ◆ Heavy duty tail-less excavator with two-section moving arm and adjustable working scope, which is flexible, stable and efficient in construction.
- ◆ Large power engine meeting European 5 emission standard is used and hydraulic system is installed for easy and efficient operation and coordination and energy saving.
- ◆ A large space cabin is provided with automatic air conditioning, air suspension damping seat and other devices to provide relaxed and enjoyable driving experience.
- ◆ 10-inch touch intelligent instruments, right side integrated operator console, and blind spot monitoring devices on the right side and rear side are installed to show the machine status and surrounding situation at any time.
- ◆ Auxiliary pipeline and electric proportional precision control function are provided for different tools and working conditions.
- ◆ With large maintenance space and removable enclosure, the maintenance activities could be carried out conveniently and easily.



SWE155UF-2PB

Parameters and performance of the main machine

Dimension (L×W×H)	mm	7945X2600X2945	
Overall weight	With rubber track	t	\
	With steel track	t	17
Standard bucket capacity	m ³	0.61	
Bucket digging ability	kN	100	
Digging force of arm	kN	76	
Max. traction	kN	\	
Deflection angle (boom)	°	\	
Travel speed (Max/Min)	km/h	5.5/3.2	
Gradeability	°	30	
Ground pressure	kPa	42.5	
Slewing speed	rpm	11	
Engine	Brand	CUMMINS	
	Model	F3.8(Euro V/US IV)	
	Type	4-cylinder, 4-stroke, water cooling, intercooling, DI	
	Displacement	L	3.8
	Power/Rotation speed	kw/rpm	90/2200
Fuel tank capacity	L	180	
	Type	Variable piston pump	
Primary pump	Flow rate	L/min	330
	Pressure of main relief valve	MPa	34.3/31.4
Hydraulic oil tank capacity	L	150	

Working range

	Arm length	mm	2500
a	Max. digging height	mm	9645
b	Max. dumping height	mm	7140
c	Max. digging depth	mm	5600
d	Max. vertical digging depth	mm	4645
e	Max. digging radius	mm	8490
f	Max. digging reach at ground level	mm	8345
g	Max. lift height of the dozer blade	mm	520
h	Max. digging depth of the dozer blade	mm	558
r	Min. swing radius	mm	2090
	Bulldozer blade length×width	mm	2600X580

Outline dimension

A	Wheel tread	mm	3000	G	Chassis ground clearance	mm	410
B	Total track length	mm	3765	H	Track height	mm	832
C	Ground clearance of platform	mm	930	I	Total length	mm	7945
D	Platform tail slewing radius	mm	1490	J	Cab roof height	mm	2885
E	Chassis width	mm	2600	K	Upper-structure width	mm	2490
F	Track width	mm	600				

★The above parameters may be different due to product upgrading.

